



Australian Government
**Department of Immigration
and Border Protection**



**Australian
BORDER FORCE**

Immigration Detention and Community Statistics Summary

31 December 2016

Table of Contents

Immigration Detention and Community Statistics Summary.....	1
About this report.....	3
Enquiries	3
Acronyms	3
Immigration Detention And Community Statistics Summary	4
Immigration Detention Population.....	6
From 1990 to 31 December 2016.....	6
People In Immigration Detention Facilities.....	7
Arrival Type.....	7
People In Immigration Detention.....	8
Nationality	8
Children In Immigration Detention.....	9
Time In Immigration Detention Facilities.....	11
Time In Community Under Residence Determination.....	12

About this report

This report provides an overview of the number of people in immigration detention and Regional Processing Centres as at midnight on the date of the report. The report is produced on a monthly basis.

Data is sourced from several departmental processing and recording systems. Data relating to the immigration detention population is dynamic and there can be delays in transmission of information from the department's immigration detention network operations. Variations in figures between this report and previous issues can occur. Due to these issues, data from the current financial year should always be considered provisional.

Further information about immigration detention is available at:

<http://www.border.gov.au/about/immigration-detention-in-australia>

Enquiries

Comments or enquiries concerning this report should be sent using the department's client service feedback form quoting the name and date of the report.

See: <http://www.border.gov.au/about/contact/make-enquiry/enquiries-and-feedback>

Acronyms

Table 1 – Acronyms used in this document

Acronym	Description
APOD	Alternative Place of Detention
IMA	Illegal Maritime Arrival
IDC/F	Immigration Detention Centre/Facility
IRH	Immigration Residential Housing
ITA	Immigration Transit Accommodation
RPC	Regional Processing Centre
S501	Section 501 of the Migration ACT
S501 Visa Cancellation	Visa cancellations based on character or related grounds

Immigration Detention And Community Statistics Summary

At 31 December 2016, there were 1364 people in immigration detention facilities, including 1101 in immigration detention on the mainland and 263 in immigration detention on Christmas Island.

A further 566 people were living in the community after being approved for a residence determination and 25,810 were living in the community after grant of a Bridging Visa E.

The table below reflects figures based on records in Department of Immigration and Border Protection systems.

Table 2 – People in Immigration Detention Facilities (IDFs), Alternative Places of Detention (APODs), Regional Processing Centres (RPCs) and the Community at 31 December 2016

Place of immigration detention	Men	Women	Children	Total	Change from Previous Summary 30/11/16
Christmas Island IDC	263	0	0	263	+ 7
Maribyrnong IDC	82	5	0	87	- 2
Perth IDC	20	11	0	31	+ 6
Villawood IDC	386	40	0	426	- 3
Yongah Hill IDC	356	0	0	356	- 12
Mainland APODs	<5	0	<5	<5	- 23
Total IDCs/APODs	1,108	56	<5	1,165	- 27
Perth IRH	0	0	0	0	- 6
Adelaide ITA	14	<5	0	15	0
Brisbane ITA	58	11	<5	70	- 17
Melbourne ITA	94	20	0	114	0
Total in IRH and ITA	166	32	<5	199	- 23
Total Facility	1,274	88	<5	1,364	- 50
Total Community under Residence Determination	181	151	234	566	+ 6
Total Community on Bridging Visa E (Including people in a re-grant process)	18,595	3,247	3,968	25,810	- 376
Republic of Nauru (RPC)	286	49	45	380	- 3
Manus Province, Papua New Guinea (RPC)	866	0	0	866	- 5
Total RPCs	1,152	49	45	1,246	- 8
Detention Group					
S501 Visa Cancellation	434	17	0	451	+ 1
Illegal Maritime Arrival	388	25	<5	415	- 9
Other	452	46	0	498	- 42
Total	1,274	88	<5	1,364	- 50

Community Population By State/Territory

Of the 566 people approved for a residence determination to live in the community, 36 per cent were in Victoria, 26.9 per cent in New South Wales, 22.6 per cent in Queensland, 7.4 per cent in Western Australia, 6.9 per cent in South Australia and 0.2 per cent in the Australian Capital Territory.

Table 3 – Community Placement Population by State/Territory at 31 December 2016

State/Territory	Adult Male	Adult Female	Child Male (<18 years)	Child Female (<18 years)	Total
Victoria	72	52	45	35	204
New South Wales	39	44	42	27	152
Queensland	39	33	35	21	128
Western Australia	22	11	6	<5	42
South Australia	9	11	7	12	39
Australian Capital Territory	0	0	<5	0	<5
Total	181	151	136	98	566

Immigration Detention Population

From 1990 to 31 December 2016

The number of people in immigration detention including foreign fishers has decreased by 44 to 1930 from 1974 in the previous report.

Figure 1 – Population in Immigration Detention

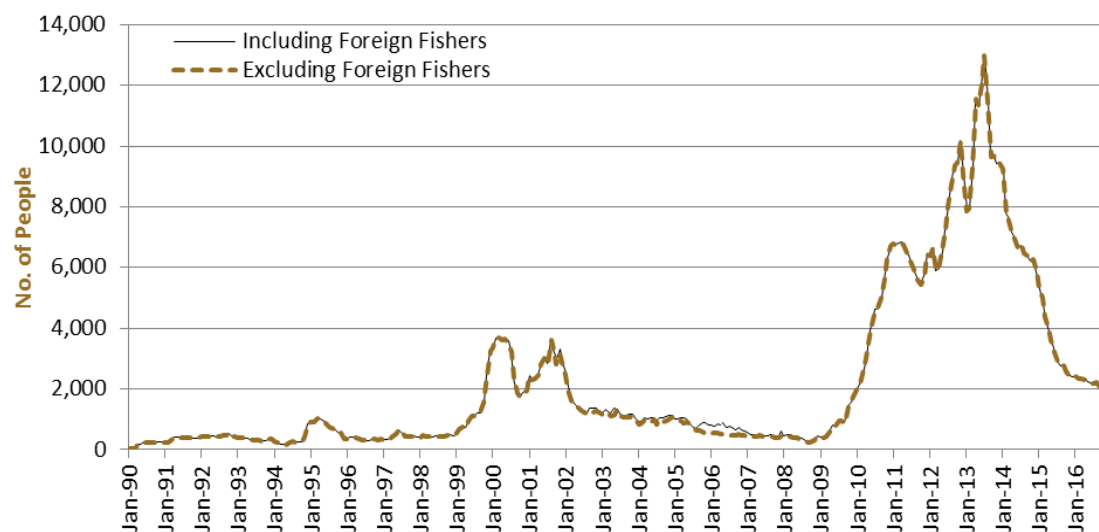


Figure 1 above, shows the number of people in immigration detention from 1990 to the date of this report. The trend had a consistent rise of people in immigration detention from January 2009 to January 2013, but has since had consistent decline.

People In Immigration Detention Facilities

Arrival Type

There were 509 people, who arrived unlawfully by air or boat, in held immigration detention facilities at 31 December 2016, representing 37.3 per cent of the total immigration detention population.

There were also 855 people (62.7 per cent of the total immigration population) who arrived in Australia lawfully and were subsequently taken into immigration detention and had visa cancellations for either over staying or breaching their visa conditions.

Figure 2 – People in Held Immigration Detention Facilities by Detention Group

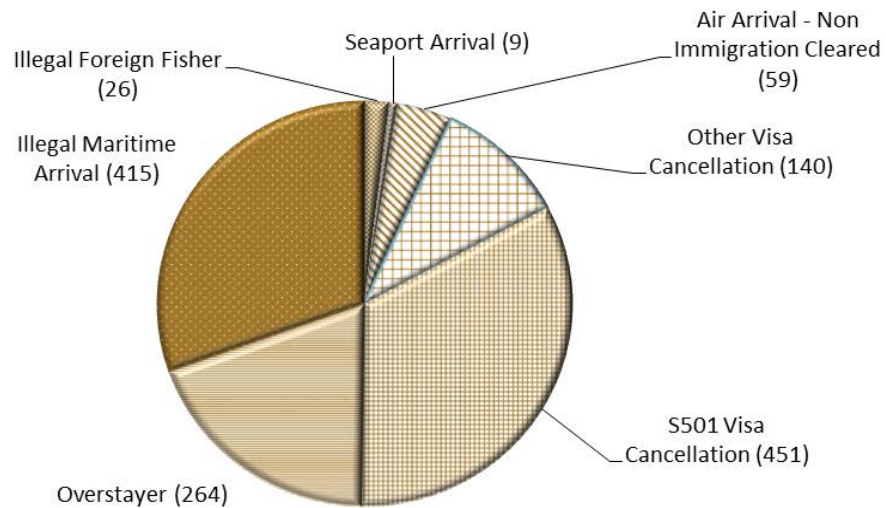


Figure 2 above, shows the number of people in held immigration detention facilities by detention group, including Overstayers, S501 and Other Visa Cancellations, Foreign Fishers, Irregular Maritime Arrivals, Unauthorised Air Arrivals, and if required – Inadequately Documented Crew Members and Others such as stowaways and ship deserters.

Table 4 – People in Held Immigration Detention Facilities by Detention Group at 31 December 2016

Place of immigration detention	S501 Visa Cancellation	IMA	Other Detention Group	Total	Change from Previous Summary 30/11/16
Christmas Island IDC	141	64	58	263	+ 7
Maribyrnong IDC	38	18	31	87	- 2
Perth IDC	12	6	13	31	+ 6
Villawood IDC	156	81	189	426	- 3
Yongah Hill IDC	77	156	123	356	- 12
Mainland APODs	0	<5	<5	<5	- 23
Total IDCs/APODs	424	326	415	1,165	- 27
Perth IRH	0	0	0	0	- 6
Adelaide ITA	<5	5	9	15	0
Brisbane ITA	26	28	16	70	- 17
Melbourne ITA	0	56	58	114	0
Total in IRH and ITA	27	89	83	199	- 23
Total Facility	451	415	498	1,364	- 50

People In Immigration Detention

Nationality

At 31 December 2016, there were 1364 people in held immigration detention facilities. Of these 1364 people, 13.5 per cent were from New Zealand, 9.5 per cent were from Iran, 9.3 per cent were from Vietnam, 6.3 per cent were from Sri Lanka and 4.5 per cent were from China.

Table 5 – People in Held Immigration Detention Facilities at 31 December 2016

Nationalities	Adult Male	Adult Female	Child Male (<18 years)	Child Female (<18 years)	Total
New Zealand	178	6	0	0	184
Iran	113	15	<5	0	129
Vietnam	119	8	0	0	127
Sri Lanka	86	0	0	0	86
China	54	7	0	0	61
India	50	<5	0	0	52
Iraq	49	<5	0	0	51
Afghanistan	49	0	0	0	49
United Kingdom	42	<5	0	0	46
Other	534	44	<5	0	579
Total	1,274	88	<5	0	1,364

At 31 December 2016, 566 were people living in the community after being approved for a residence determination. Of these 566 people, 45.1 per cent were from Iran, 15.5 per cent were from Sri Lanka, 10.1 per cent were Stateless and 6.5 per cent were from Iraq.

Table 6 – People in the Community under Residence Determination at 31 December 2016

Nationalities	Adult Male	Adult Female	Child Male (<18 years)	Child Female (<18 years)	Total
Iran	88	78	50	39	255
Sri Lanka	24	20	29	15	88
Stateless	17	13	11	16	57
Iraq	12	7	9	9	37
Vietnam	12	9	9	6	36
Other	28	24	28	13	93
Total	181	151	136	98	566

Children In Immigration Detention

At 31 December 2016, there were less than five children (aged less than 18 years) in Immigration Residential Housing, Immigration Transit Accommodation and Alternative Places of Detention.

Figure 3 – Children in Immigration Residential Housing, Immigration Transit Accommodation and Alternative Places of Detention

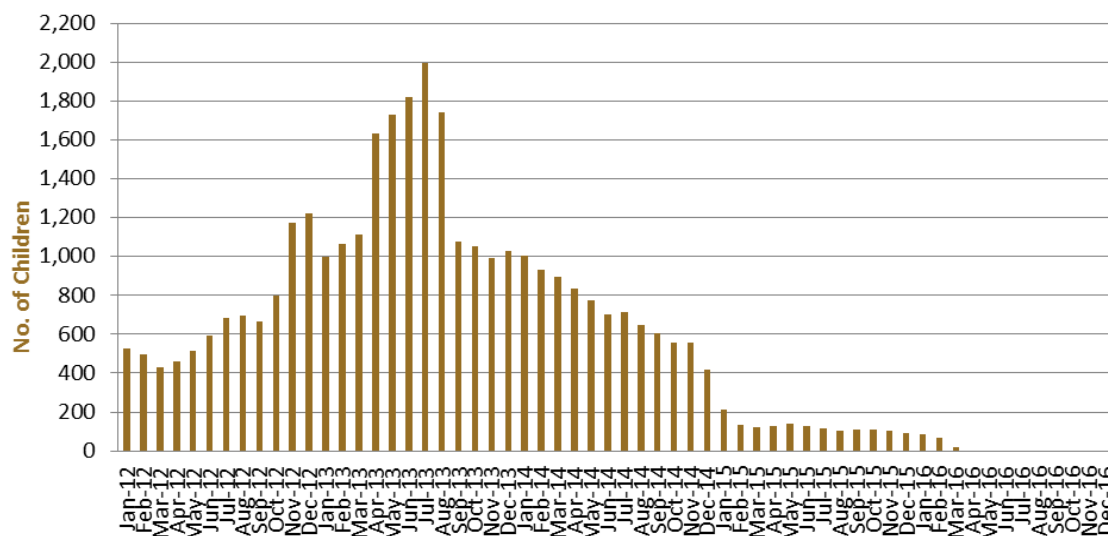


Figure 3 above, shows the number of children in immigration detention facilities and alternative places of detention from January 2012 to the date of this report. The continuous increase in the number of children in detention facilities from April 2013 to August 2013 was due to a rapid increase in irregular maritime arrivals during this period. The number of children in immigration detention facilities reduced in September 2013, as children completed mandatory processing and were transferred into the community. The number of children in detention facilities continued to decline during the late 2013 and 2014, with further reduction in January 2015.

At 31 December 2016, the number of children living in the community after being approved for a residence determination decreased to 234 from 249 in the previous report.

Figure 4 – Children in the community under Residence Determination

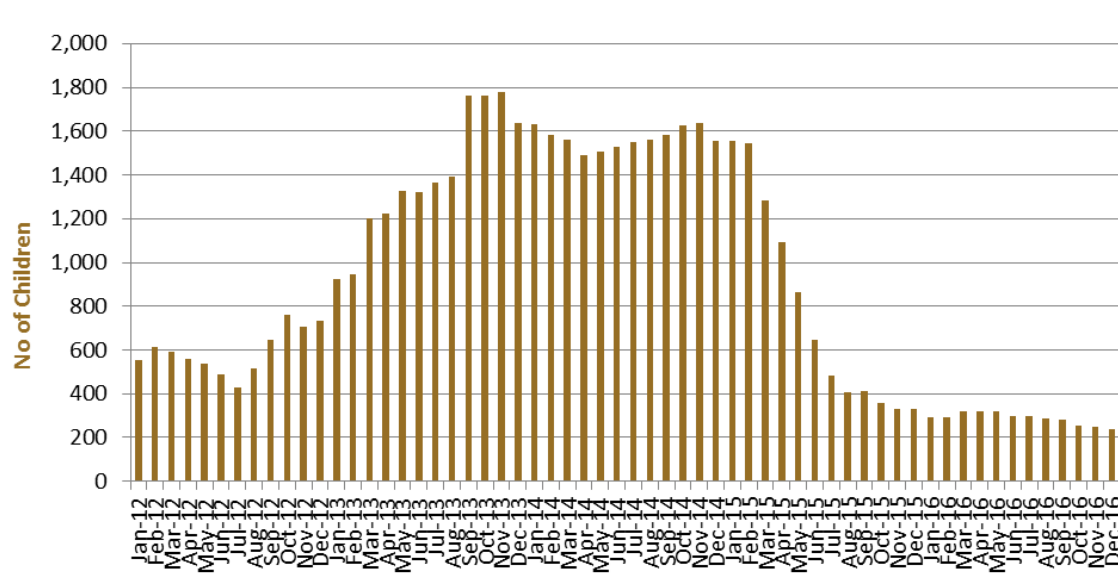


Figure 4 above, shows the number of children in the community under residence determination from January 2012 to the date of this report. The number of children in the community under residence determination, has levelled off at its lowest number since the peak in November 2013, as a result of releases into the community on Bridging E visas.

Table 7 – Children in Immigration Detention and in the Community at 31 December 2016 ¹

Placement Type	Children
Immigration Residential Housing	0
Immigration Transit Accommodation	<5
Alternative Places of Detention	<5
Total Facility	<5
Total in the Community under a Residence Determination	234
Total in the Community on a Bridging E visa (including in re-grant process)	3,968

(1) ¹ At 31 December 2016, there were less than five children in held immigration detention facilities. The table above reflects figures based on records in Department of Immigration and Border Protection systems.

Time In Immigration Detention Facilities

At 31 December 2016, there were 1364 people in immigration detention facilities. Of these 1364 people, 28 per cent had been detained for 91 days or less and 55.8 per cent had been detained for 365 days or less.

Table 8 – Length of time in Held Immigration Detention Facilities at 31 December 2016

Period Detained	Total	% of Total
7 days or less	33	2.4%
8 days - 31 days	197	14.4%
32 days - 91 days	152	11.1%
92 days - 182 days	171	12.5%
183 days - 365 days	208	15.2%
366 days - 547 days	144	10.6%
548 days - 730 days	128	9.4%
Greater than 730 days	331	24.3%
Total	1,364	100%

At 31 December 2016, the average period of time for people held in detention facilities was 484 days.

Figure 5 – Average number of days in Held Immigration Detention Facilities only

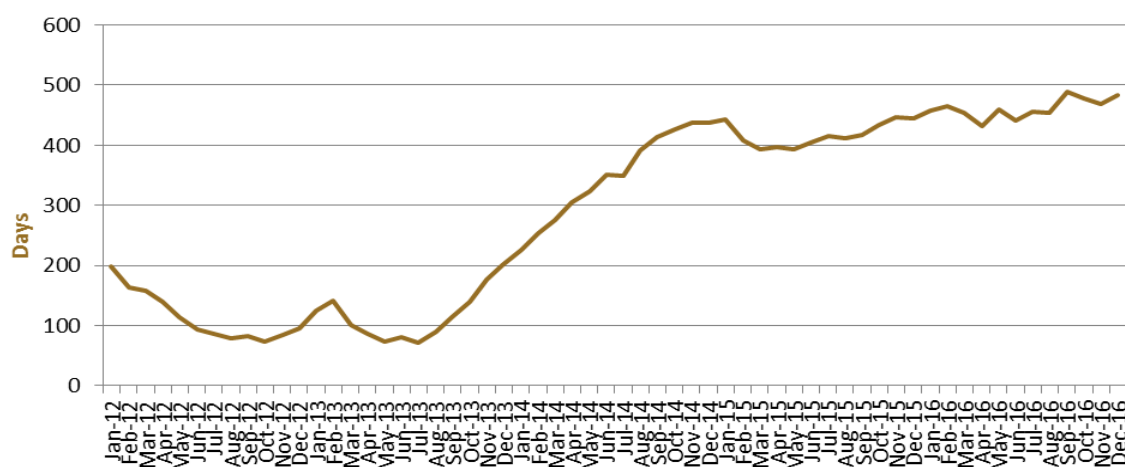


Figure 5 above, shows the average days in held immigration detention only by month from January 2012 to the date of this report. The average period of time for people held in detention facilities steadily increased from July 2013 to January 2015. Between January 2015 and March 2015, the average period of time for people in held detention facilities decreased.

Time In Community Under Residence Determination

Of the 566 people in the community under residence determination, as at 31 December 2016, 5.3 per cent had been in the community for 91 days or less and 49.5 per cent had been in the community for 365 days or less.

Table 9 – Length of Time in Community under Residence Determination at 31 December 2016

Period Detained	Total	% of Total
7 days or less	<5	0.4%
8 days - 31 days	11	1.9%
32 days - 91 days	17	3.0%
92 days - 182 days	15	2.7%
183 days - 365 days	235	41.5%
366 days - 547 days	56	9.9%
548 days - 730 days	45	8.0%
Greater than 730 days	185	32.7%
Total	566	100%